

Announcement

9th FLUXONICS RSFQ design workshop

Engineering single-flux-quantum microelectronics

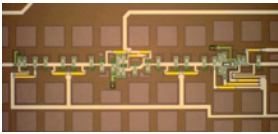
September 11, 2015

University Savoie Mont Blanc - Chambéry – France

Address : 27 rue Marcoz – Amphitheater "Decottignies"



The workshop is directed to those who want to get familiar with aspects of design and simulation of superconductive electronic circuits and the development of emerging applications.



Registration

Registration via email is preferred and encouraged. Choice of accommodation should also be mentioned.

Applications and all other correspondence concerning the workshop should be addressed to:

Pascal FEBVRE
IMEP-LAHC - CNRS UMR5130
Université Savoie Mont Blanc
Campus scientifique
73076 Le Bourget du Lac cedex
France
+33 4 79 75 88 64 / secrétariat : +33 4 79 75 84 73
e-mail: Pascal.Febvre@univ-smb.fr





Agenda

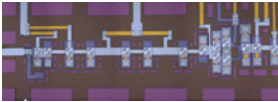
The aim of the workshop is to discuss recent developments and future activities in the field of RSFQ (Rapid Single Flux Quantum) design with particular emphasis on the translation of scientific knowledge into industrial needs.

09-10 2015 | Thursday

- Arrival / check-in and social event

09-11 2015 | Friday

- Oral presentations related to several technical issues and scientific aspects of SE design, such as: signal sensing, high throughput interfacing, new circuit concepts
- System integration topics



Travel Information

Chambéry is a city located between Lyon, Grenoble, Torino and Geneva.

Arrival by plane via Lyon Saint Exupéry :

Direct bus shuttles from Lyon Saint Exupéry airport will bring you at the train/bus station at the heart of Chambéry.

<http://www.lyonaeroports.com/eng/Access-maps-car-parks/To-come-to-leave-from-the-Airport/Buses>

http://www.lyonaeroports.com/content/download/56738/1004382/version/1/file/LYS_intermodalité_Annecy_pr_intemps+ete+2015+-+WEB+2.pdf

In case no bus shuttle is available at your time of arrival, it is also possible to take the train for Chambéry directly at the Lyon Saint-Exupéry airport.

Arrival by plane via Geneva : the simplest solution is to take the train to Chambéry-Challes les Eaux train station.

Accommodation

Hotels and workshop are at walking distance from the Chambéry train/bus station.

Hôtel des Princes - Chambéry (4 rue de Boigne) - 3 stars - <http://www.hoteldesprinces.com>
Price for single rooms is 80 € with breakfast - double rooms is 100 € with breakfast for 2 people

Art Hotel – Future IBIS STYLES Chambéry Centre Gare (154 rue sommeiller) - 3 stars -
<http://www.arthotelchambery.com>

Price for single rooms is 82 € with breakfast - double rooms is 92 € with breakfast for 2 people



- 1 - RSFQ design workshop - University Savoie Mont Blanc
- 2 - Hotel des Princes
- 3 - Art hotel - Future IBIS STYLE Chambéry centre gare
- 4 - Train station
- 5 - Bus station

All places are at walking distance from each other

